

A grayscale photograph of an industrial interior, likely a warehouse or factory, featuring a complex network of steel beams and pipes. The image is overlaid with a large, semi-transparent circular graphic that serves as a background for the text.

MEC Pro Design

BUILDING SYSTEM ENGINEERING



MEC Pro Design

MEC Pro Design provides comprehensive engineering design and consulting for building systems, including HVAC, plumbing, fire protection, electrical, and medical gas systems for hospitals and labs. Leveraging over 20 years of expertise, our team integrates advanced solutions like Solar Rooftops and Smart Control systems to enhance sustainability, convenience, and quality of life. We are committed to delivering high standards and tailored solutions to meet our clients' needs.

Services

- **HVAC and Ventilation:** Design of energy-efficient HVAC systems for optimal air quality.
- **Plumbing and Fire Protection:** Engineering of safe, compliant plumbing and fire safety systems.
- **Electrical and Communication Systems:** Efficient electrical and communication infrastructure planning.
- **Medical Gas Systems:** Specialized medical gas systems for hospitals and labs.
- **Sustainable Tech Integration:** Incorporating Solar Rooftops and Smart Control for sustainability.

Leaders



Tanete Chaiyapong
Managing Director

BUILDING SYSTEM ENGINEERING

MEC Pro Design



Portfolios

PORTFOLIOS | **Walden Condominium Thonglor 13** | Design Mechanical, Electrical, and Plumbing System



Overview:

An 8-story condominium with 2 basement floors and a construction area of approximately 10,000 square meters.

Location:

Sukhumvit 49/6, Bangkok

Owner:

Habitat Group Co., Ltd.

PORTFOLIOS | **Kitch Hotel** | Design Mechanical, Electrical, and Plumbing System



Overview:

A 4-story hotel and retail space with 1 basement floor and a construction area of approximately 3,450 square meters.

Location:

Sukhumvit 49/6, Bangkok

Owner:

Habitat Group Co., Ltd.



PORTFOLIOS | **KFC,** | Design Mechanical, Electrical, and Plumbing System



Overview:

A construction area of approximately 190 square meters at Big C Pracha Uthit.

Location:

Pracha Uthit., Bangkok

Owner:

Central Restaurant Group

PORTFOLIOS | **Satit La-orutis School Skywalk** | Design Mechanical, Electrical, and Plumbing System



Overview:

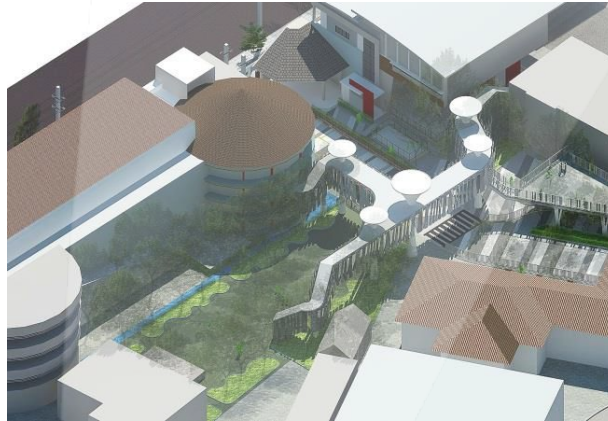
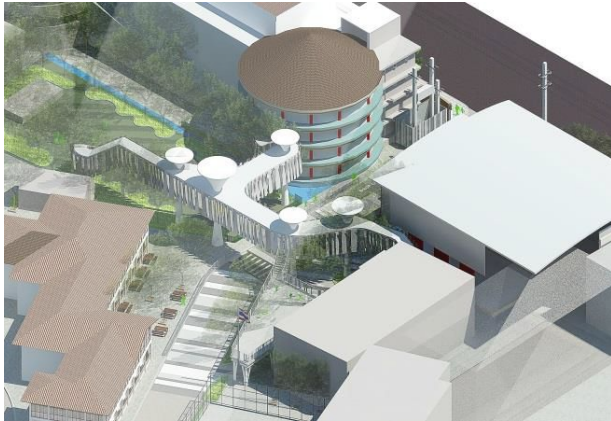
A construction area connecting the buildings of Satit La-orutis School.

Location:

Nakhon Ratchasima Road, Bangkok

Owner:

Suan Dusit University



PORTFOLIOS | **The CoD in Printing and Packaging Building** | Design Mechanical, Electrical, and Plumbing System



Overview:

The Center of Excellence in Printing and Packaging Building, 3 stories with 1 basement floor

Location:

Suan Dusit University, Suphanburi Campus.

Owner:

Suan Dusit University



Overview:

SCB Wealth Hub office with a construction area of approximately 4,600 square meters.

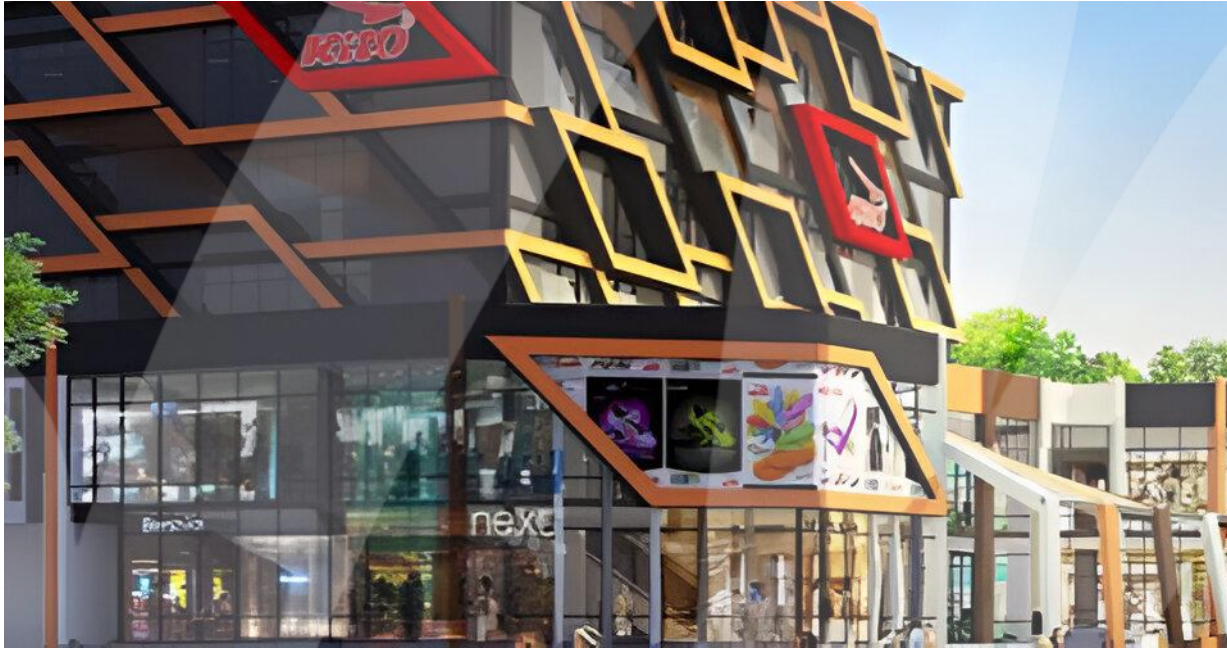
Location:

31st floor and 35th floor at Empire Tower, Bangkok

Owner:

**Siam Commercial Bank (SCB)
Construction and Maintenance
Management.**

PORTFOLIOS | **SCB Wealth Hub at Kito Building** | Design Mechanical, Electrical, and Plumbing System



Overview:

SCB Wealth Hub office with a construction area of approximately 585 square meters.

Location:

2nd floor at Kito Building, Bangkok

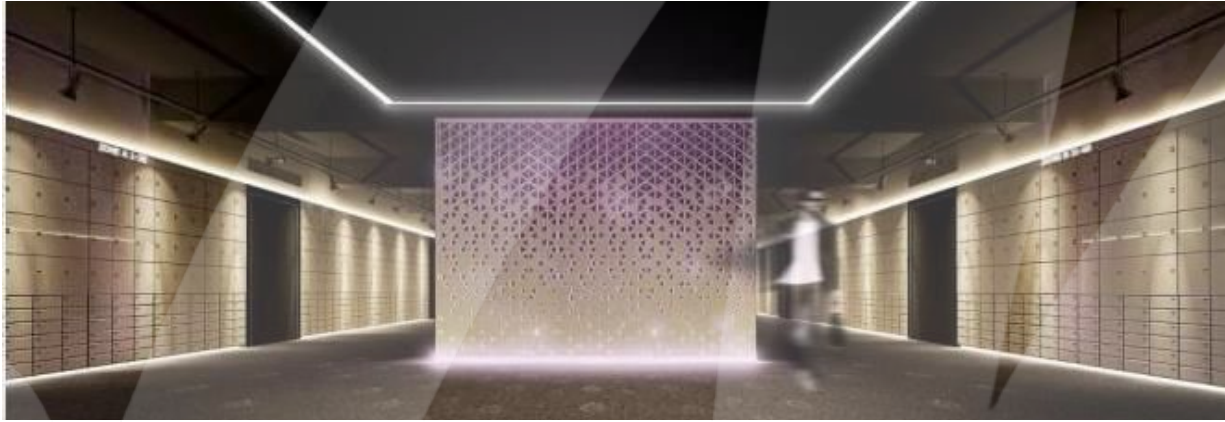
Owner:

**Siam Commercial Bank (SCB)
Construction and Maintenance
Management.**

SCB WEALTH



PORTFOLIOS | **SCB Strong Room** | Design Mechanical, Electrical, and Plumbing System



Overview:

Office space with a construction area of approximately 315 square meters.

Location:

Siam Commercial Bank Public Company Limited, Chidlom Branch.

Owner:

Siam Commercial Bank (SCB) Construction and Maintenance Management.



PORTFOLIOS | **Faculty of Dentistry, Mae Fah Luang University.** | Design Mechanical, Electrical, and Plumbing System



Overview:

Interior design for the Faculty of Dentistry building, with a construction area of approximately 1,500 square meters.

Location:

Chiangrai

Owner:

Mae Fah Luang University



LET'S CONNECT

ME Headquarter

22 Soi 30 Chokchai 4 Rd., Latphrao,
Bangkok 10230 Thailand

ME Design and I Co., Ltd.

Tel. +66(2)656-6776 Fax. +66(2)208-9199
Email: info@medesign.co.th

ME Consulting Group Co., Ltd.

Tel. +66(2)656-6776 Fax. +66(2)208-9199
Email: info@medesign.co.th

ME Estate Services Co., Ltd.

Tel. +66(85)546-4694, +66(2)656-6776
Email: condotiddoi@gmail.com

ME Healthiness Service Co., Ltd.

Tel. +0836195165, 02-279-6565
Email: mehealthyclinic.001@gmail.com
LINE ID: [@mehealthyclinic](https://www.mehealthyclinic.com)

Office

MEC Pro Design Co., Ltd.

Level 4th , 567 Building , Rama IX Soi 51
Suanluang, Bangkok 10250 Thailand

Tel: +66(2)170-8029 , +66(97)094-8917
E-mail: mecpro.design@gmail.com



Let's you and **ME build together!**

